

## CELL-13

### LED Module and Driver Set



#### Description

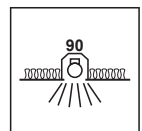
The CELL series are a plug and play LED lamp module and LED driver set. They are the perfect solution for residential homes to commercial projects such as hotels, clubs, pubs and bars. Designed not only as a replacement for traditional halogen lamps in most applications, but also as a replaceable LED lamp and driver set for a range of click in frames, as a complete downlight solution. For retrofit, it's as easy as removing the standard MR16 halogen lamp and transformer and replacing it with the CELL lamp and LED driver. It suits most MR16 downlight frames, depending on height.

As a complete lamp and frame solution, simply choose from a range of click in frames on offer to suit the style and décor. Featuring a reflector style lens with a choice of 15°, 24°, 36° or 60° beam angle effects to suit ceiling heights or lighting effects. Available in 9W, 13W and 17W options depending on the light intensity required. With the choice of Extra Warm White, Warm White, Neutral White or White colour temperature options to suit the desired light appearance. Complete with dimmable LED driver and flex and plug. Backed by our Three Year Replacement Warranty.

#### Specification Features

- Input Voltage: 200-240V 50-60HZ
- Power (W): 13
- IP rating (IP): IP44\*
- Lumens (lm): Extra Warm White 2700K - 1200lm  
Warm White 3000K - 1200lm  
Neutral White 4000K - 1310lm  
White 5000K - 1150lm
- LED type: COB
- CCT: 2700K - 3000K - 4000K - 5000K
- CRI: ≥80
- Beam angle (°): 15°/24°/36°/60°
- Dimmable: Yes
- Lifespan (hrs): 50,000hrs

\* IP44 rating is from the underside of the down light once installed into the ceiling..



#### Diagrams / Additional



Item No.	Variant	Colour	Beam Angle (°)
CELL-13	27016	2700K	60°
	27017		36°
	27018		24°
	27019		15°
CELL-13	27020	3000K	60°
	27021		36°
	27022		24°
	27023		15°
CELL-13	27024	4000K	60°
	27025		36°
	27026		24°
	27027		15°
CELL-13	27028	5000K	60°
	27029		36°
	27030		24°
	27031		15°

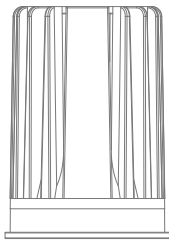
## CELL 13 Series Multi Frame Solution



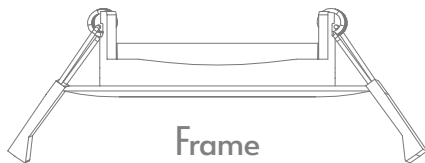
Combine the power of one module with multiple frames

### Assembly

Module



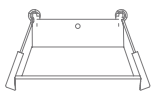
Press down firmly until module clicks into frame.



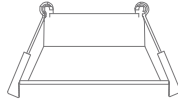
Frame

### Available Frames

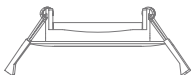
DEEP-75



DEEP-90



TILT-75



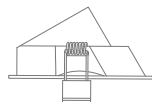
TILT-90



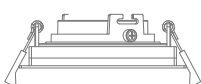
KEY-75 & PIN-75



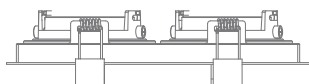
WALL-90



SLOT-1



SLOT-2



DEEPCELL-75-13W



DEEPCELL-90-13W



TILTCELL-75-13W



TILTCELL-90-13W



KEYCELL-75-13W



PINCELL-75-13W



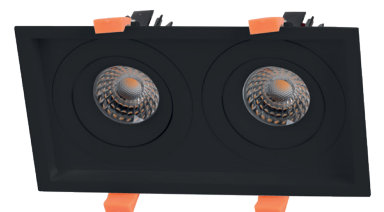
WALLCELL-90-13W



SLOTCELL-1-13W



SLOTCELL-2-13W



## CELL 13 Series Multi Frame Solution



Combine the power of one module with multiple frames

### Assembled

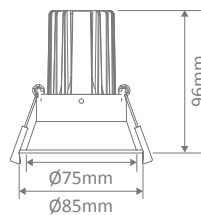
#### Modules

Item No.	Variant	Colour	Beam Angle (°)
CELL-13	27016	2700K	60°
	27017		36°
	27018		24°
	27019		15°
CELL-13	27020	3000K	60°
	27021		36°
	27022		24°
	27023		15°
CELL-13	27024	4000K	60°
	27025		36°
	27026		24°
	27027		15°
CELL-13	27028	5000K	60°
	27029		36°
	27030		24°
	27031		15°

#### Frames

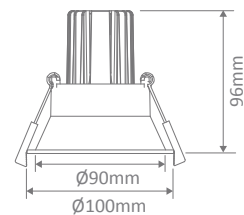
Item No.	Variant	Frame Colour
DEEP-75	27048	White
	27049	Black
DEEP-90	27050	White
	27051	Black
TILT-75	27052	White
	27053	Black
TILT-90	27054	White
	27055	Black
KEY-75	27064	White
	27065	Black
PIN-75	27062	White
	27063	Black
WALL-90	27056	White
	27057	Black
SLOT-1	27058	White
	27059	Black
SLOT-2	27060	White
	27061	Black

**DEEPCELL-75-13W**



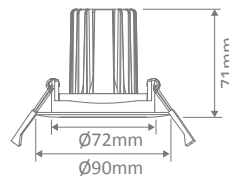
Cutout:  $\varnothing 75-77\text{mm}$

**DEEPCELL-90-13W**



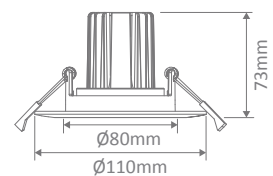
Cutout:  $\varnothing 90-92\text{mm}$

**TILTCELL-75-13W**



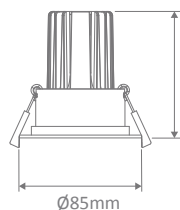
Cutout:  $\varnothing 72-75\text{mm}$

**TILTCELL-90-13W**



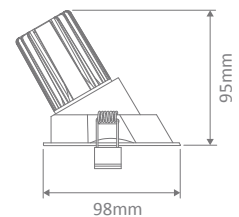
Cutout:  $\varnothing 80-85\text{mm}$

**KEYCELL-75-13W**  
**PINCELL-75-13W**



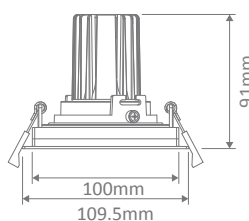
Cutout:  $\varnothing 70-75\text{mm}$

**WALLCELL-90-13W**



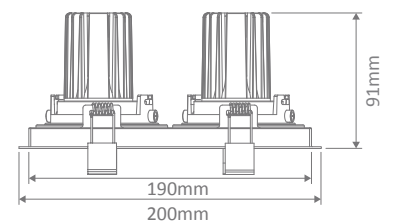
Cutout:  $\varnothing 88-90\text{mm}$

**SLOTCELL-1-13W**



Cutout: L100mm x W100mm

**SLOTCELL-2-13W**



Cutout: L190mm x W100mm