



# Plusline Small

## Plusline S 200W R7s 240V 1BC/10

Mains-voltage linear lamp giving white halogen light

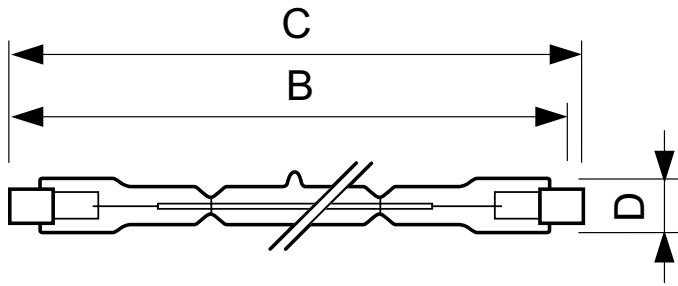
### Product data

General Information	
Cap base	R7S [ R7s]
Burning Position	UNIVERSAL [ Any/Universal]
Nominal lifetime (nom.)	2000 h
Light Technical	
Lamp Luminous Flux 25°C EL (Nom)	3000 lm
Colour Temperature, horizontal (Nom)	2900 K
Lamp Luminous Efficacy EM (Nom)	15 lm/W
Colour Rendering Index,horiz (Nom)	100
Operating and Electrical	
Power (Rated) (Nom)	200 W
Lamp current (nom.)	0.83 A
Starting time (nom.)	0.0 s
Voltage (Nom)	240 V
Controls and Dimming	
Dimmable	yes
Mechanical and Housing	
Bulb finish	Clear (CL)

Approval and Application	
Energy efficiency label (EEL)	E
Luminaire Design Requirements	
Bulb temperature (max.)	900 °C
Pinch temperature (max.)	350 °C
Product Data	
Full product code	872790081920500
Order product name	Plusline S 200W R7s 240V 1BC/10
EAN/UPC – product	8727900819205
Order code	924735745597
Local Code	DESMALL200W240V
Numerator – quantity per pack	1
Numerator – packs per outer box	10
Material no. (12NC)	924735745597
Net weight (piece)	0.008 kg
ILCOS Code	HDG//RS-200-240-R7s-114,2

## Plusline Small

### Dimensional drawing



Product	D (max)	B (max)	B	B (min)	C (max)
Plusline S 200W R7s 240V 1BC/10	12 mm	115.8 mm	114.2 mm	112.6 mm	117.6 mm

DESmall 200W R7s 240V T3 CL

