

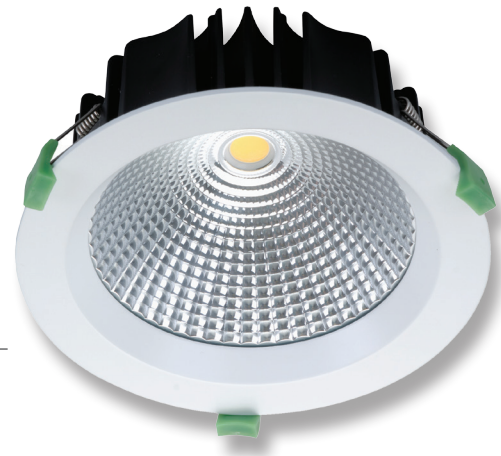
# NEO-25

## Downlight



### Description

Introducing the NEO-25 to Evergreen range of LED down lights. The NEO-25 is the second in the line-up of single point COB LED down lights. Features include deep etched frame and glass diffuser with a satin white powder coated finish. Light is provided from a single point COB high performing LED with a perfectly matched 60° optical reflector. The reflector behaves in much the same way as a metal halide fixture does with the favourable scallop style illumination. Added benefits of an IP44 rating and fully mains dimmable LED driver makes this a perfect alternative to metal halide and PLC styled down lights. Applications include schools, shopping centres, retail shops etc.



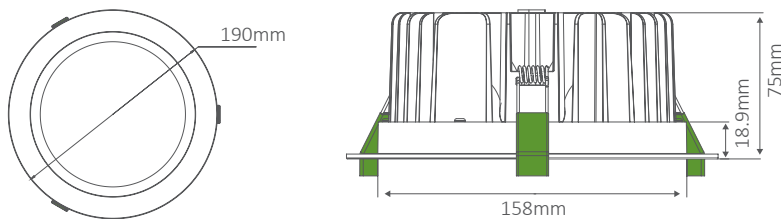
### Specification Features

Input Voltage: 240V AC  
 Power (W): 25W  
 IP rating (IP): IP44\*  
 Lumens (lm): Warm White 3000K - 1700lm  
 White 5000K - 1800lm  
 LED type: Epistar COB  
 CCT: 3000K - 5000K  
 CRI: ≥80  
 Beam angle (°): 60°  
 Dimmable: Yes\*\*  
 Lifespan (hrs): 50,000hrs  
 Cutout (∅): ∅160-170mm

Product code: EV-NEO-25-W-WW  
 Order code: 20578  
 Colour: Satin White - Warm White 3000K  
 Product code: EV-NEO-25-W-W  
 Order code: 20579  
 Colour: Satin White - White 5000K

\* IP44 rating is from the underside of the down light once installed into the ceiling.  
 \*\* Tested on the Domus EV-DIMMER (20505). May work on other but not tested.

### Diagrams / Additional



### 3000K

### 5000K

